

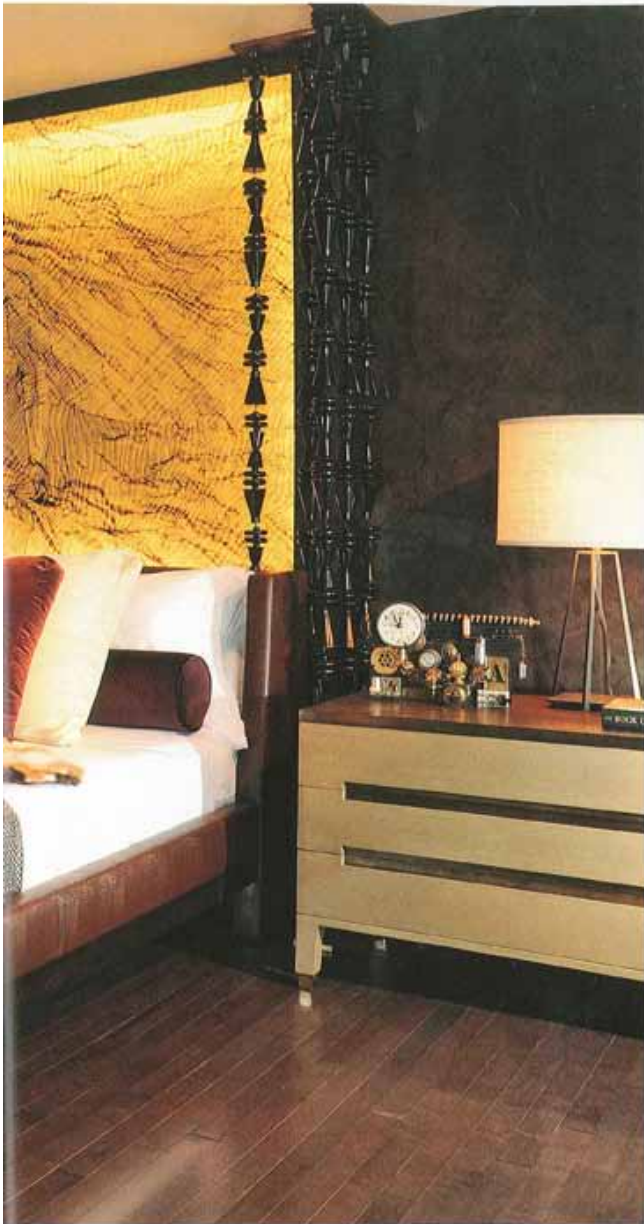
Annette English & Associates featured in





LIFORNIAHOMEDSIGN.COM SPRING 2013

Annette English & Associates California Home + Design Spring 2013



2013 CH+D AWARD  
SHOWCASE HOUSE

**ANNETTE ENGLISH  
MELISSA HAFT**

ANNETTE ENGLISH & ASSOCIATES,  
LOS ANGELES

*Esquire House Master Suite*

**W**ELL-HEELED HOLLYWOOD ACTRESSES from Judy Garland to Nicole Kidman have made tracks to the boutique of shoemaker Salvatore Ferragamo since 1910, when he opened his first boot shop in Santa Barbara. His iconic inventions, which include the cork wedge and the cage heel, remain fresh when interpreted decades later, as they were for the richly textured master suite designed by Annette English & Associates for the 2010 Esquire House in Los Angeles. "Ferragamo pushed the envelope by using traditional materials in unusual and modern ways," says Melissa Haft, who, with codesigner Annette English, created the space in concert with the Ferragamo brand. The team began by updating the concept of the four-poster bed, designing lacquered wooden beads—a wink at the spindle shape of a high heel—in place of columns to anchor each bed corner. Venetian plaster in deep mink accented a backlit headboard, which was created using a swath of silk fabric framed in glass. In the bathroom, waterfalls of agate flakes strung on cables became sconces.

"FERRAGAMO LAUNCHED HIS MEN'S COLLECTION IN 1970," SAYS DESIGNER MELISSA HAFT OF THE ERA THAT INSPIRED THE BACHELOR-PAD MASTER SUITE, WHICH IS RICHLY TEXTURED WITH TRADITIONAL MATERIALS SUCH AS VENETIAN PLASTER AND LEATHER. "IT SURPRISED US THAT DESPITE BEING VERY MASCULINE, THE SPACE REALLY APPEALED TO LOTS OF WOMEN."



"The Esquire bachelor understands style, has impeccable taste and loves things that are hand-made," says Haft. In reference to the bespoke details favored by the fashion brand and the team's imaginary client, Haft and English installed custom drawer pulls, made in the shape of Ferragamo's signature "gancino" hardware, in the walk-in closets. Hand-laid wall coverings in bark and mother-of-pearl add depth to the suite's entry hall. "The space was really about marrying traditional materials with an innovative application." —Sarah White

CLOCKWISE FROM TOP LEFT: DESIGNER ANNETTE ENGLISH VISITED THE FERRAGAMO MUSEUM IN FLORENCE FOR INSPIRATION, FILLING THE WALK-IN CLOSETS WITH CLOTHING AND ACCESSORIES FROM THE FASHION HOUSE; METALLIC ACCENTS AND A DARK-STAINED SLAB OF PETRIFIED WOOD ANCHOR THE SITTING AREA; HAFT CREATED A DEPTH OF COLOR BY MIXING WOODS AND STONES IN THE BATHROOM.



